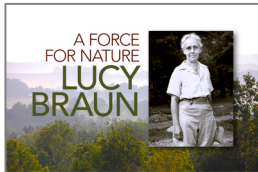


*A Force for Nature: Lucy Braun*

KET Distribution

**Kentucky Promotional Images**

The production team has secured promotional rights for these images for the one-hour documentary *A Force for Nature: Lucy Braun*. The Kentucky images are posted on the Lucy Braun Project page of Voyageur Media Group's website: <http://voyageurmedia.org/wordpress/portfolio/lucy-braun/>. Additional promotional images are available on request. Captions are provided next to each thumbnail image below. Please use the courtesy notice provided for each image.



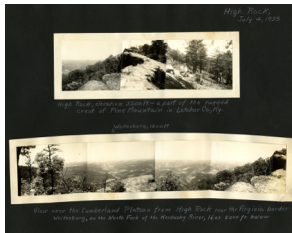
**Image 01: documentary logo.** JPG, 10 x 8 at 300 dpi, 2.8 MB  
Caption: Program title logo for *A Force for Nature: Lucy Braun*.  
Courtesy, Meg Hanrahan Media.



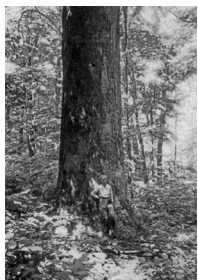
**Image 02: Lucy Braun portrait.** JPG, 4 x 6 at 300 dpi, 1 MB  
Caption: E. Lucy Braun during field research (date unknown).  
Courtesy, University of Cincinnati.



**Image 03: Natural Bridge.** JPG, 6 x 4 at 300 dpi, 1.1 MB  
Caption: Lucy Braun (second from right) with a group of botanists at the top of Natural Bridge in what is now Red River Gorge, Kentucky, 1917.  
Courtesy, Braun Photographic Collection, Cincinnati History Library & Archives, Cincinnati Museum Center.



**Image 04: Pine Mountain, Kentucky.** JPG, 6 x 4 at 300 dpi, 1.8 MB  
Caption: Lucy and Annette Braun conducted a significant amount of field research in Eastern Kentucky, which they documented in photographic albums and reports. This photo album page shows forest landscapes from High Rock on Pine Mountain in Letcher County, 1933.  
Courtesy, Braun Photographic Collection, Cincinnati History Library & Archives, Cincinnati Museum Center.



**Image 05: Lucy Braun next to tulip poplar tree.** JPG, 4 x 6 at 300 dpi, 1.5 MB  
Caption: Lucy Braun stands in front of a massive poplar tree located at Lynn Fork of Leatherwood in Perry County, Kentucky, during field work in 1935. Despite Braun's efforts, this old-growth forest was logged four years later. The loss of Leatherwood strengthened Braun's resolve as a conservation leader.  
Courtesy: Smithsonian Institution Archives



**Image 06: Lucy and Annette Braun.** JPG, 5 x 3 at 300 dpi, 1 MB  
Caption: Lucy (left) and Annette Braun, early leaders in the conservation movement, helped preserve natural places in Ohio and Kentucky, including the Edge of Appalachia Preserve System in Adams, County, Ohio.  
Courtesy: Braun Photographic Collection, Cincinnati History Library & Archives, Cincinnati Museum Center.